



**EUROPEAN
COPPER IN
ARCHITECTURE
AWARDS 17**

REWARDING COPPER ARCHITECTURE

by Chris Hodson

An international team of architect judges has chosen the outright Winner and four Commendations for the 2015 European Copper in Architecture Awards, a celebration of the very best in contemporary architecture. But our website users also had their say with the Public Choice poll Winner.

The seventeenth iteration of these popular, biennial architectural awards recognises the growing influence of copper and its alloys on modern design. But it also exposes to a wider international audience inspirational projects, some of which might otherwise go unrecognised. This year, over 50 entries were received from 17 countries.

This year's judging panel consisted of four architects: Ulla Hell (1) - PLASMA studio, Italy; Erik Nobel (2) - NOBEL arkitekter, Denmark; Fernando Sá (3) - Pitágoras Arquitectos, Portugal and Keith Williams (4) keith williams architects, UK. All have been recipients of previous Copper in Architecture Awards and therefore understand the aims of the programme from the competitors' viewpoint as well as that of the judges.

HIGH STANDARDS

The judges were impressed by the high standards demonstrated across the entries generally. But eventually they settled on shortlisted projects (described here by their architects).

Chair of the Judges, Keith Williams commented: "Whilst there was a considerable degree of unanimity amongst the judges, there was also extensive debate. Neither the scale of project nor the quantity of copper used was regarded a factor, as is evidenced from the range of projects shortlisted. The judges were far more interested in the contribution that copper and its alloys can make to the creation of fine architecture. Arriving at the top 10 was far from easy and all those shortlisted have produced exceptional work. But the task of choosing an outright winner alongside four outstanding commendations proved even more demanding."

PUBLIC CHOICE

During the summer, registered copperconcept.org visitors voted on-line for their favourite shortlisted Awards entry. More information and images of all the 2015 entries and previous Awards can be viewed at:

copperconcept.org/awards



1



3



2



4



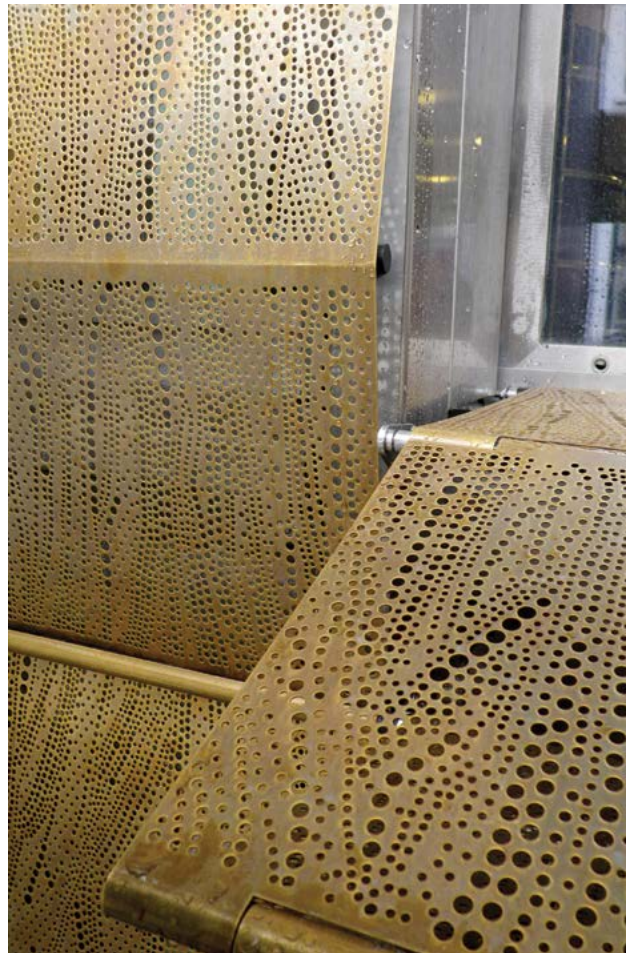
Photos: Jens Markus Lindhe

WINNER

**TROLLBEADS HOUSE,
COPENHAGEN, DENMARK
BBP ARKITEKTER**

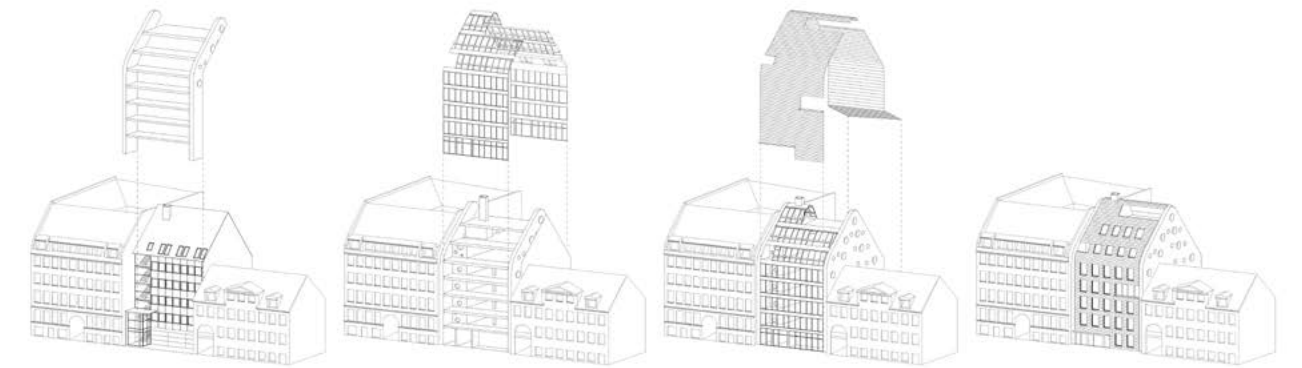
THE JUDGES' VIEWS

“ This transformable building is a unique and powerful response to its urban context – surprising, yet obvious. It effortlessly overcomes the constraints of an existing building frame without compromise and reflects the rhythm of the streets. The central concept is carried through undiluted and executed with care to an impressive level of detail.



A 1960s office building has been transformed into a high security building, organised like a Venetian merchant house, with goods loaded at the ground floor, stock and offices above, and, at the highest level, a residence for the owner with a roof terrace. The challenge was to make a building that respects its curtain wall typology, while relating to the historic houses on either side.

A new skin of glass and golden copper alloy covers the facade, the roof and a small courtyard at the back. On the outside a patterned, perforated golden copper alloy curtain is hung, incorporating motorized folding elements. Every morning half of the curtain opens, emulating the adjacent historic houses with repeating window reveals in a 'massive' wall. After working hours the curtain closes automatically, creating a burglar-proof vault. After dark, dim lighting reveals a modern glass house behind a veil of translucent brass.



Photos: Filip Dujardin



THE JUDGES' VIEWS

“The abstract, diagrammatic rationale behind this design is seductive and delivered with conviction as a pavilion within a walled garden. The conventional use of copper does not detract from its strong form and subversion of the traditional gabled house.”

COMMENDED & PUBLIC CHOICE WINNER

HOUSE VDV, DESTELBERGEN, BELGIUM
GRAUX & BAEYENS ARCHITECTEN

House VDV appears simultaneously familiar and strange. The basic volume, consisting of a ground floor and upper level within a pitched roof, alludes to familiar archetypes such as the rural farmhouse or barn. Yet, at the same time, the simplicity of the volume is broken up by large glass facades, establishing relationships with the surrounding trees and listed castle wall surrounding the plot.

Mandatory planning requirements for the plot made sure that the house was conceived as a pavilion. The solution is essentially a garden-house with no front or rear but, instead, two identical facades and a 360-degree experience of the entire plot. The untreated copper cladding will continuously change colour over the years, from bright in the beginning to brown and eventually green at the end. It gives the project a poetic impermanence, which is echoed in the reflection of the surrounding trees in the glass facades.





Photos: Johan Fowelin



COMMENDED

FERRY TERMINAL BUILDINGS, STOCKHOLM, SWEDEN MARGE ARKITEKTER

The buildings serve travellers heading to the Stockholm archipelago and are located in one of the city's most visited areas opposite the Royal Palace. There are three new buildings: two terminals and one building with a café, viewing steps, storage and a recycling station. The buildings are scaled down in relation to the surrounding architecture, maintaining open views of the Royal Palace. The design is based on an elementary form – the cone – framing different views over the water. The cones are combined in different ways to meet the demands of the different operations, resulting in buildings with no specific fronts or backs.

Each building is unique but together they create a cohesive expression for visitors. Exterior facades are covered with burnished brass alloy, accentuating the sculptural form of the buildings with a gradually evolving surface. Glazing by the waiting hall and the sales areas is drawn back to give rain shelter and to provide space for displays. Due to the construction of the buildings a precise expression has been created where guttering and drain pipes can be avoided.

THE JUDGES' VIEWS

“ This powerful group of buildings along Stockholm's waterfront is truly special and defies the mundane ferry terminal building typology. Deferential in scale to their historic neighbours, the buildings make no architectural concessions and instantly add to the city's heritage.





THE JUDGES' VIEWS

“ A deceptively simple design cleverly incorporating below-ground space, this sports hall box is beautifully done, even though defined by its programme and flat site. Its detailed execution is exemplary, with uninterrupted glazing and a subtle use of perforated copper.

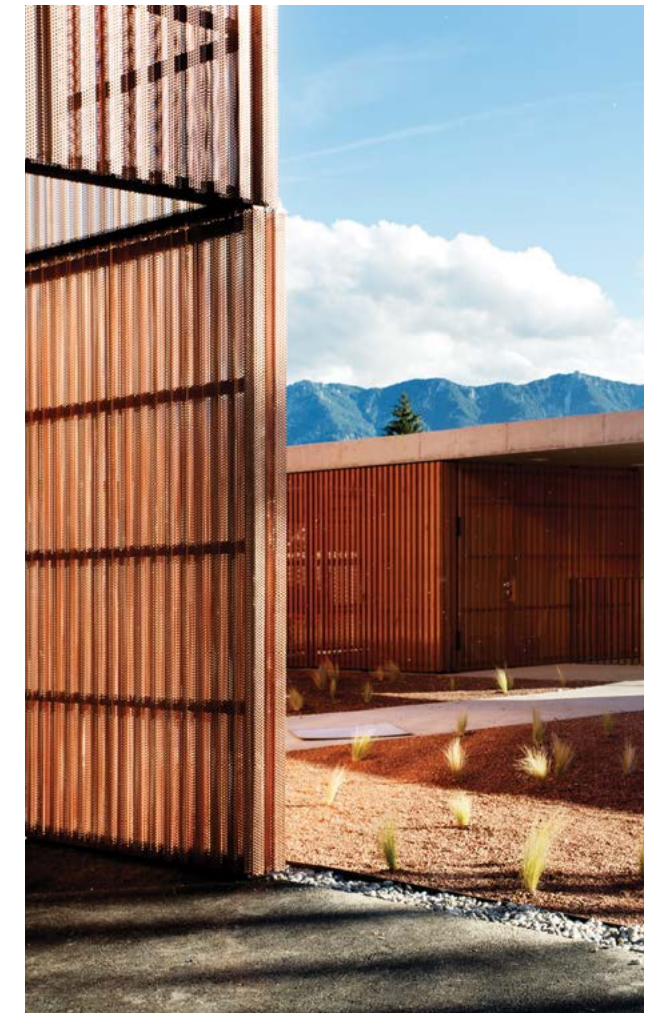


COMMENDED

SPORTS HALL, ST MARTIN, AUSTRIA DIETGER WISSOUNIG ARCHITEKTEN

At the front of the elongated structure is the main entrance with a small forecourt. The three-storey building has been lowered four metres below street level in order to create a direct underground access to the adjacent school and to give the extensive hall with a total height of 11.8 metres an appropriate form in the locality.

The building's appearance is characterised by a façade made of folded, perforated copper plates covering the hall like a semi-transparent veil. The copper sheets are staggered by one folded element at each storey, which structures the front horizontally. The façade is interrupted by glazing on the upper floor at the northeast side and on the ground floor at the southeast side. The former ensures an even and glare-free incidence of daylight in addition to the numerous skylights, while the latter provides a view into the sports hall from the schoolyard.



Photos: Julien Lanoo



THE JUDGES' VIEWS

“ This free-standing, crystalline copper tower is handsome in its own right with a simplicity of form, considered use of materials and crisp detailing. But it also plays a key urban design role in a very public situation, uniting and making sense of its surroundings.

COMMENDED

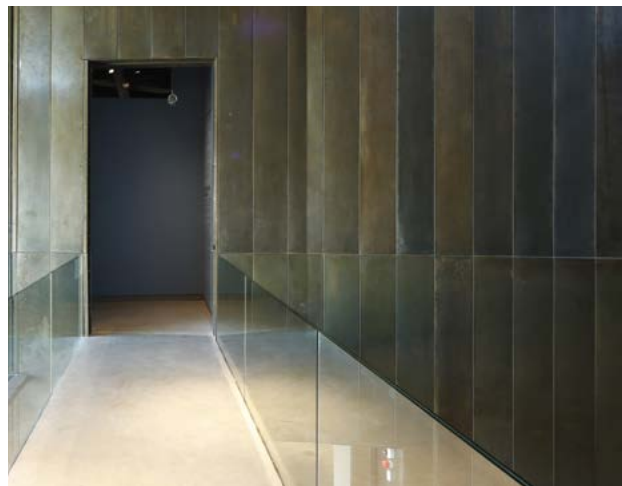
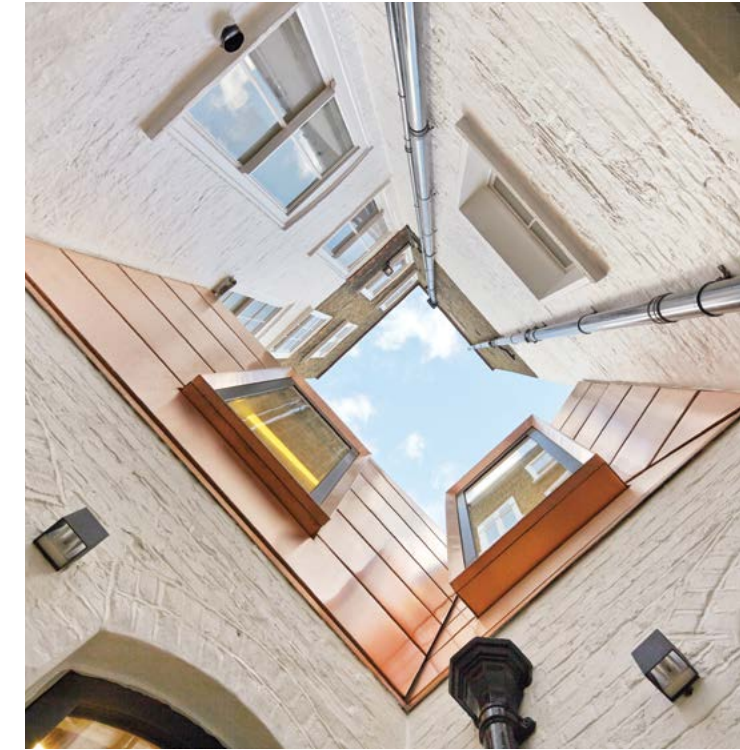
EURAVENIR TOWER, LILLE, FRANCE LAN

The Euravenir Tower project occupies the last free parcel of Phase One of the Euralille Area. The plot's strategic position, located at the intersection of different axes, demanded a sophisticated solution that acts as a hub, uniting the elements gravitating around it. By extending and crossing the axes within the plot, an initial extrusion generated a small tower. With completion of the Avenue Le Corbusier, this vertical element also becomes a corner building on the Place Valladolid signalling the city to approaching drivers.

This architecture has created a new urban space that combines private and public, vertical and horizontal. The facades become a series of windows that provide a 360-degree panorama of the city. Here, a lattice motif is formed by cut-outs in the facades. The copper is used as a kind of fixed edge along the opaque or semi-glazed stretches of the façade. It is also present in the form of perforated panels that help regulate the amount of light penetrating the building.



Photos: Alan Williams



SHORTLISTED
MUSEUM OF THE FRANCO-PRUSSIAN WAR OF 1870 AND THE ANNEXATION, FRANCE
BRUNO MADER ARCHITECTES

Clad in patinated brass, the monolithic building marries a simple plan form with irregular rooflines. The roof folds along east-west axes, creating a dialogue of slopes and fragmenting the volume, gashed with glazed openings to capture the north light. These illuminate a central double-height entrance hall space in such a way that it feels neither interior nor exterior.

This focal point is a dramatic space, whose dark, irregular walls and lacerated roof symbolise war. The huge panels of patinated metal that form the hall's walls are the same as those used on the facades, giving a powerful identity, coherence and sculptural character.

SHORTLISTED
GREAT JAMES STREET, LONDON, UK
EMRYS ARCHITECTS

A bronze triangulated roof form now sits over landlocked space to the rear of two historic townhouses, creating a dramatic transition from the old to the new, its height and form designed to fit key points around the perimeter. The patina of the bronze on this contemporary folded roof, as well as courtyard facades and window surrounds, was selected to harmonise with the existing buildings.

An asymmetric lofted ceiling sits under the new roof with recessed lighting accentuating the geometric planes. Use of roof lights and glazed access to courtyard areas has ensured that the building is flooded with light.



SHORTLISTED

**RHONE DEPARTMENT ARCHIVES,
LYON, FRANCE
GAUTIER + CONQUET & ASSOCIES**

This prominent civic building reconciles the need to protect the collection while welcoming the public, as part of the urban and cultural process. The technical challenge is to supply air with a highly stable level of humidity whilst maintaining low energy consumption.

The project is conceived as a hierarchy of boxes of differing scales, one inside the other. The main cubic volumes are made up of precious materials: stone, a golden copper alloy and glass. The central section encloses the archives with copper alloy embossed panels while the top contains the offices, behind a ventilated double skin glass envelope, like a lid on a precious casket.



Photos: Renaud Araud



Photos: Christian Richter

SHORTLISTED

**KUNSTMUSEUM, AHRENSHOOP, GERMANY
STAAB ARCHITEKTEN**

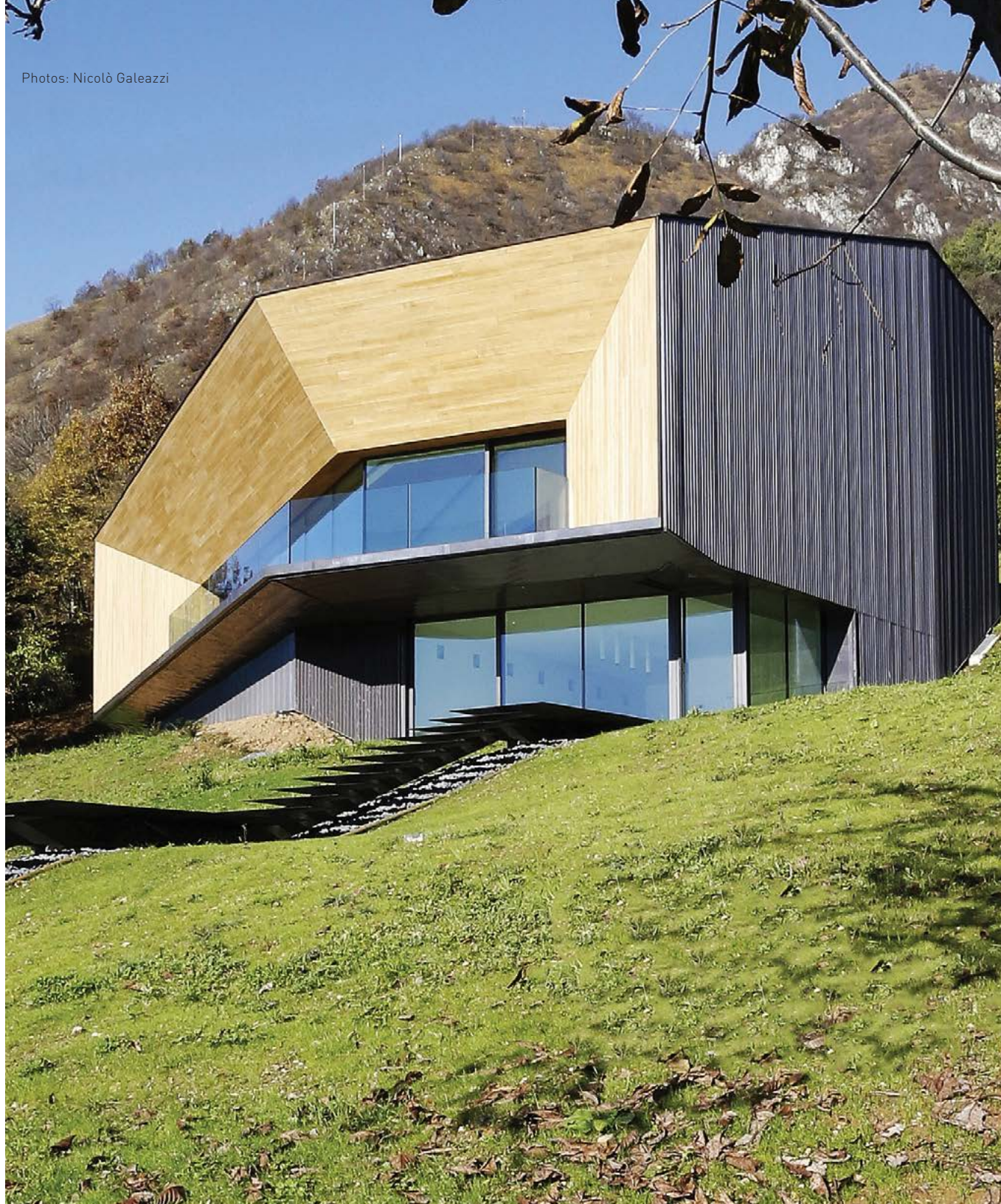
The design concept represents reinterpretation of the local vernacular typology into a modern museum structure. Emerging from thatched-roof houses, a constellation of single-room buildings has been developed. By fusing the roof forms, a sculptural building volume is generated that unites these apparently freestanding structures into a single complex.

For the external skin, bevelled brass sheets refer to the linear texture of reed thatching. The brass will quickly weather to give a darker surface reminiscent of thatched roofs. The desired surface irregularity was achieved using subtle variations in the profiles and the product develops an unexpectedly varied look.





Photos: Nicolò Galeazzi



SHORTLISTED

ALPS VILLA, LUMEZZANE, ITALY CAMILLO BOTTICINI ARCHITETTO

The house stands on a steep slope, amongst trees, and seems to bite into the mountain: it is deep-rooted to the north and “emancipated” to the south. The plan of the house is C-shaped, wrapping around a patio, and irregular, creating three forms with variable heights increasing from the north-east, where the volume disappears into the ground.

The green meadows and trees frame the external skin made of corrugated pre-oxidised copper and Accoya wood. The ventilated copper wall is modulated with a slight pleating, its non-reflective surface almost quivering in the light, while the timber of the great splay reflects southern light.

ALL ENTRIES

- Lenbachhaus Museum, Munich, Germany
Foster & Partners
- Library in Litzendorf, Germany
H²M
- Private Villa in Las Brisas, Mallorca, Spain
STUDIO-MISHIN Architectural Bureau
- Copper Health Centre, Legnica, Poland
SPA Sadowski Sadowska Poznań
- Faculty of Physics at the University of Warsaw, Poland
Kuratowicz & Associate
- Bang & Olufsen store in Herning, Denmark
Lars Sternberg, Arkitec A/S
- Copper Villa, Luebeck, Germany
KBNK Architekten
- Wilanów Town Hall, Warszawa, Poland
Kurytowicz & Associates
- Snæfellsstofa Visitor Centre, Iceland
ARKÍS arkitektar
- Ecole d'Art et 25 Logements
ARC.AME
- dlrLexicon, Dun Laoghaire, Co Dublin, Ireland
Carr Cotter Naessens Architects
- Villa Saapaskallio, Finland
Niko Sirvo
- JW3 Jewish Community Centre, London, UK
Lifschutz Davidson Sandilands
- Arcadia Nursery, University of Edinburgh, UK
Malcolm Fraser Architects
- Edinburgh Centre for Carbon Innovation (ECCI), University of Edinburgh, UK
Malcolm Fraser Architects
- House in Areosa, Viana do Castelo, Portugal
Branco Cavaleiro Arquitectos
- Ronann apartments & office space, London, UK
pH+
- The Blackburn Wing, Wetherby, UK
The Harris Partnership
- Tgiesa Crapera, CH-Lenzerheide, Switzerland
SAM Architekten und Partner AG
- Mühleweg Apartments CH-Uetikon am See, Switzerland
SAM Architekten und Partner AG
- The Pavilion, Museum in the Park, Stroud, UK
David Austin and Associates Ltd
- The Fairway, Leicester, UK
Daykin Marshall Studio
- The Lake House, Balatonszepezd, Hungary
Modum Ltd
- Fistral Blue Apartments, Newquay, UK
LHC Architecture + Urbanism
- The Chancellors' Building, University Of Bath, UK
Stride Treglown
- Keynsham Civic Centre & One Stop Shop, UK
AHR
- The Moor Market, Sheffield, UK
Leslie Jones Architecture
- Canalla Disco, Pamplona, Spain
Vaillo Irigaray Architects
- Single-family house, Wrocław, Poland
ARC2 Fabryka Projektowa
- Edge, Poland
Przemek Olczyk MOBIUS Architekci
- Zac des lilas, crèche and building for young workers, Paris, France
Chartier Dalix et Avenier Cornejo
- Hector Berlioz sports center, Vincennes, France
Dietmar Feichtinger Architectes
- Hwb Dinbych, multi-purpose facility, Denbigh, Wales
John McCall Architects
- Conkwell Pod, Bath, UK
Stonewood Design
- “Les deux muses”, Conservatory of Music and Dance in Melun, France
DE-SO architectes
- Universite Paris-Est Val de Marne, France
flint architects
- Country House , Segovia, Spain
Forero Arquitectura
- Hayle South Quay, Cornwall, UK
Feilden Clegg Bradley Studios
- La Villa Marie-Thérèse, Strasbourg, France
ARCHICUB
- Museum of Fire, Zory, Poland
OVO Grąbczewscy Architekci
- Conservatoire Claude Debussy, Paris, France
Basalt Architecture architectes



EUROPEAN COPPER IN ARCHITECTURE AWARDS 17

The Awards programme is part of the European Copper in Architecture Campaign, which also includes Copper Architecture Forum magazine and the Copperconcept.org website, both of which include additional coverage of the Awards and all the entries, as well as information about future Awards.

MEET YOU AT OUR 2017 AWARDS!

VISIT COPPERCONCEPT.ORG TO:

- **order** your free printed copy of Copper Architecture Forum magazine
- **subscribe** for the Copper Concept Newsletter
- **find out more** about the European Copper in Architecture Awards
- **join** our Copper Concept LinkedIn group
- **reach** our Copper in Architecture Facebook page



Editor: Chris Hodson RIBA

Publisher: European Copper Institute, Avenue de Tervueren 168 b-10, B-1150 Brussels, Belgium